



VINE & BRANCHES

A Monthly Newsletter of Fish Lake Lutheran Church

January 2012

Let it Snow!

Where's all the snow? A lot of us have been asking that question so far this winter. Especially when only one year ago, the Minnesota Vikings were playing in TCF Bank Stadium because, under the weight of so much snow, the roof of the Metrodome fell in! I remember at the time, that roof failure seemed to cap a miserable season for the Vikings. Or as Brett Favre put it, "*everything that could go wrong, did.*" Unfortunately, for the Vikings, the 2011 season hasn't been any better – even *without* a roof collapse!

I am pleased to tell the members and friends of Fish Lake Lutheran Church that, in 2011, our roof did *not* fall in. Our ministry remains strong and our membership remains faithful. However, our budget *did* come in short again this year (*see pg. 9*). As a congregation, we certainly faced some economic challenges in the past year, and the New Year is likely to bring more challenges. But our community of faith is resilient, and we will move forward with *bold determination, persistent love and faithful commitment*, as we always do. One of the carols we sang together during our recent Christmas celebration was Edmund Sears' "*It Came Upon a Midnight Clear*," written in 1849. Buried in the fourth verse is a remarkable message; a message that I would commend to us as we begin 2012. Here are the words;

"O ye beneath life's crushing load, whose forms are bending low, who toil along the climbing way, with painful steps and slow; look now, for glad and golden hours, come swiftly on the wing; Oh rest beside the weary road, and hear the angels sing."

Ye beneath life's crushing load. A load of snow enough to crush a stadium roof. A load of debt enough to crush a family's spirit. A load of despair enough to make life feel like toil. A load of ministry challenges enough to make steps painful and slow. But look! Rest, and Listen! Glad and golden hours are on the horizon, and angels sing signs of hope. Emmanuel, remember? *God is with us!*

I begin this New Year with a simple word of thanks. Thank you for being the Church when life is joyful and without storm. Thank you for being the Church when the way is dark and the future, uncertain. Thank you for being generous in your giving, humble in your receiving, spirited in your service, thoughtful in your trials, and gracious in your accomplishments. Our roof is solid because our foundation is secure. Let it snow!

P. Dale



Winter Schedule

Don't miss all of the fun winter events happening at Fish Lake Lutheran church!
Mark the following dates on your calendar:

F5@5—Chili Cook Off!!!

Sunday, January 8, 5-7:00 pm

F55

Wednesday, January 11, 11:00 am

“FAITH 4 LIFE”

Sr. High Bible Study, Sunday, January 15, 6-8:00 pm

KNITTING

Thursday, January 19, 7:00 pm, in church library

BLOCK OF THE MONTH WORKSHOP

Saturday, January 21, 8:30am-5:00pm

ANNUAL CONGREGATIONAL MEETING & POTLUCK

Sunday, January 22, following worship

KIDS KLUB

Monday, January 23, 5:30-7:15pm

PRIME TIME

Tuesday, January 24, 11:00 am

YOUTH SUNDAY– SOUPER BOWL OF CARING

Sunday, January 29, during worship

CONFIRMATION RETREAT—CAMP WAPO

Saturday, February 4th, 9:00am– Sunday, February 5th, 12:00pm

Stewardship at Fish Lake—Double Your Money Back!

As we enter into yet another exciting year of mission and ministry at Fish Lake Lutheran, and considering the financial means necessary to accomplish much of it, here are three simple steps to increased financial giving that “we might want to” consider:

1. When the ushers bring the offering plates to the altar the pastor will place all the offering envelopes in a big round tumbler on the altar.
2. One of the acolytes will step forward and draw out one of the offering envelopes from the big round tumbler on the altar.
3. The 'winner' (person or family whose offering envelope is drawn) will receive *Double Their Money Back!*

What do you think of such an *unrealistic* approach to financial stewardship? Obviously it’s just in good-natured humor that we laugh at such an approach, but there is a bit of *wisdom* and *reality* to it, isn’t there?

Of course, we don’t give of our gifts, expecting “*double our money back*”, but in a way, that’s what we get isn’t it? As a faithful financial steward to Fish Lake Lutheran, haven't you noticed how, when giving, especially out of scarcity, that you receive *abundance* in return?

God is so faithful in blessing us in return when we are faithful to him in our giving, that whenever we give of our resources, *no matter the amount*, to God and to God’s Church, our names are *all* drawn as “winners”. And that’s *guaranteed!*

So let’s all be reminded of that as we enter into a new financial commitment to Fish Lake Lutheran in 2012 – that whatever *we’re* capable of giving, *God* is capable of multiplying and blessing in far greater ways than we might ever expect!



Hmmm...maybe it’s not such an unrealistic approach? Now if we could just find a big round tumbler!

Bless you in your financial stewardship decisions for 2012.

Vision & Mission at Fish Lake—GROW in (technological) Outreach!



1. *Social Media – Who needs it and how do I make the most of it?*
2. *What do you need to be aware of in this age of technology – for you – your kids – your grandkids?*
3. *What can I do to keep myself and my kids safe in this world of increased technology?*
4. *Social Media and The Church? I don't get it.*

Maybe you've asked questions similar to these regarding this world of increased social media and expanding technology. A lot of people ask such questions. But at the end of the day, let's face it – social media is here to stay!

Even Fish Lake Lutheran is on board with *facebook* and our *weekly electronic NFFL (News From Fish Lake)*. These are important ways that we can communicate via status updates, photos, website links, etc, of all the news and happenings at Fish Lake Lutheran, not just on a monthly basis, but on a *weekly* and even *daily* basis!

Fish Lake Lutheran even has what's called a QR (Quick Response) code! (*see pg. 5*) Now, when you download the QR code scanner to your smartphone and scan our QR code, it will take you directly to our church website! It's another example of how technology has expanded our world of convenience and possibilities. And though these are all ways, when used effectively, to increase the ease and convenience and opportunity for clear and constant communication at Fish Lake Lutheran, we understand that there are many who don't see the need or who don't understand how any of it works.

So, with the generous gift our new computer lab, we hope, in the very near future, to offer answers to many of your questions regarding electronic and social media through short courses and/or work sessions, led by Pr. Dale, Paul Stewart and Noel Petit. They will lead a discussion around social media in the church and technology in general. And of course, there will be good "old-fashioned" treats and coffee available! So stay tuned for more details next month! We hope you will come to "be social". Bring your questions and/or concerns and discover *new* ways to share "*the old, old story.*"

And if you haven't yet, make sure to "like" us on *facebook*. Currently, 135 friends and members of Fish Lake Lutheran, "like" us! Woohoo! Also, you can sign up on our church website, to receive our Weekly E-News entitled, *NFFL (News From Fish Lake)*. Currently, that is being sent out to 150 subscribers each week! Praise the Lord! Now *that's* how we GROW in (technological) Outreach!

(cont'd on pg. 5)

Vision & Mission at Fish Lake—GROW in *(technological)* Outreach! *(cont'd)*



Fish Lake Lutheran's
QR code

So what is a QR code and why do we need one?

QR stands for *Quick Response*, and though we don't really *need* one, they are pretty cool to have and make finding out about Fish Lake Lutheran much more convenient for many, all while expanding our opportunities to *GROW in our Outreach*.

A QR code is a 2D barcode, that, when scanned by a smartphone, takes the user to a website or other information. In our case, the code will take the user directly to www.fishlakelutheran.org

You'll see our QR code now in our *weekly bulletin announcements* and monthly *Vine & Branches* newsletter – again, for the purpose of providing ease and convenience as we strategically seek out ways to be more innovative in how we communicate with members and visitors alike.



Thank You!

Thank You!



Dear F55ers,

Thanks to you all for watching our youngsters Friday night. We all wanted you to know that it was greatly appreciated and we had a lot of fun getting out, just the adults. It was a wonderful opportunity for us all to mingle and bowl and few frames together! The reports that have come from the kids seems to be the same, they had tons of fun too! Thanks again and God Bless you all. In Peace,

~*The Parents of Fish Lake Lutheran*

Fish Lake Lutheran has been blessed with the gift of music throughout this Advent and Christmas season, by both members and friends alike. As a congregation, we'd like to express our deep appreciation for this gift, which enhances our time of worship together all the more. The time that goes into practicing and preparing is significant. So at the risk of not naming them all – Musicians of Fish Lake Lutheran (you know who you are) – *we thank you* and give God thanks and praise for you. And along with those, we also want to publicly recognize our *guest* musicians at each of our Advent mid-week services: *Stu Janis, Sonda and Zachary Jacobson, Renee King, and Mimi Genheimer.*

~*The Congregation of Fish Lake Lutheran*

Announcements, Events & Activities

Annual Congregational Meeting & Potluck

All confirmed and voting members of Fish Lake Lutheran Church are invited to take part in the annual business meeting of the congregation at approximately 11:30am in the sanctuary on **Sunday, January 22, 2012**. Regular items of business always include reports, elections, and approval

**JANUARY 22
CONGREGATIONAL
MEETING**

of a budget. It's always a good opportunity as well, to reflect on what God has been doing at Fish Lake Lutheran in the past year and what God might be calling or challenging us to do in 2012. As usual, a pot-luck lunch will be served immediately following the meeting in the church basement. It's delicious every year! **Written annual reports will be made available by Sunday, January 15th.**

2012 Offering Envelopes

To save on the large expense of shipping, please pick up your offering envelopes from the table in the basement. If you are going to be visiting a member who has not or cannot pick up their envelopes please feel free to deliver them! If, for some reason, you do not see your envelopes please call Nicole in the office or drop her a note. Thank you!

The Fish Lake Lutheran Lenten Devotional

Do you have an aspect of your faith journey that you have always wanted to share? Is there a special Bible verse that speaks to you? Here is your chance to share this with your brothers and sisters at Fish Lake Lutheran. We hope to put together a Lenten Devotional, written by members of Fish Lake Lutheran, for the congregation to use. You are asked to write a devotion for a day in Lent. Use a Bible verse, favorite quote or poem and then write what it means for you. *Submit your devotion(s) by email or paper to the church office by February 12th*. If you would prefer you can submit a drawing or photo of other artwork that means something to you. If you have questions, or are in need of any guidance, contact Pastor Dale or Sister LaDonna.

Tanzania, Africa – A Mission Trip Opportunity

Fish Lake Lutheran will be sending its fourth delegation of its members to Tanzania to visit our partner congregation, Wasa, the beginning of October, 2012. Pastor Dale and his family will also be there on their sabbatical! Contact Pr. Dale or LaDonna Olson if you are interested in participating in this life-changing mission opportunity!

Announcements, Events & Activities—cont'd

We Are Starting Off the New Year Right – *We resolve to keep on knitting!* Fish Lake Knitters are gathering **Thursday, January 19th at 7:00 pm** in the church library for knitting, fellowship, devotions, and for those interested in working on projects such as hats, buntings, blankets to donate to hospitals. If you're new to knitting, it's a great way to pick up new tricks and always have someone at the ready to help you through difficult parts of patterns or explain a new-to-you technique. If you are an experienced/expert knitter this is definitely the place for you! Please contact the church office at 651-674-4252 or email office@fishlakelutheran.org.

Nominating Committee is Looking for Leaders

The Fish Lake Lutheran Nominating Committee is currently seeking names to place on the election ballot for our annual meeting in January. Position openings this year include: 3-three year terms on **Church Council**; 3-three year terms on the **Cemetery Board**; 1-three year term on the **Audit Committee**; 1-one year term for **Head Usher**. If you would like to find out more about these positions or have an interest in being nominated for any of them, please contact anyone on the Nominating Committee (Rob Anderson, Jenny Niedzielski, Katie Santjer) or Pastor Dale. Thank you!

Fish Lake Lutheran Social Ministry Team Needs YOU!

Are you mission-minded? Of course you are! This is Fish Lake Lutheran! The Social Mission and Ministry Committee is looking for more members and offering yet more ways for you to be Jesus' hands and feet. If you're interested, please catch up with one of us at church or contact us at home. Thank you! Sister LaDonna (651) 674-8526 or ladolson@msn.com; Jill (651) 237-0223 or thefungustafsons@aol.com.

Are you a family in need of some financial assistance, or do know of a family that is? Members of Fish Lake Lutheran volunteer their time at the *Shalom Thrift Store* in Cambridge. Because of the generosity of their time, Fish Lake Lutheran receives funds each month to help families with financial struggles. Shalom also donates \$10 vouchers to Fish Lake Lutheran to give to families who are struggling financially to be used at the Shalom store. Please contact Pastor Dale or the church office if you, or someone you know, could benefit from either one or both of these services.

The 2012 Altar Flower Chart is now available

It is located on the WELCA bulletin board in the church basement. Cost is \$30.00 for an altar arrangement. Please drop off payments in the church office. Contact Judy Nelson or the Church Office for more information.

FAMILY • FRIENDS • FOOD • FUN • FAITH



The Great Fish Lake Chili Cook-off



Sunday, January 8th, 5-7pm

Join us in a Chili Cook Off. We challenge you to be brave!!!

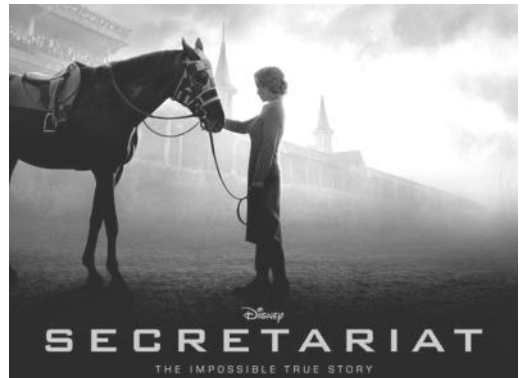
Bring your Chili prepared to eat. This may include any fixings you use

(cheese, sour cream, crackers, onions, peppers, etc.) for your family. Small cups and bread will be provided.

In order to move to the next Chili, you will be asked to complete a PRIVATE scoring sheet to be submitted for the Chili you tried. Each scoring sheet will be the same and the Chilis will be anonymous. After dinner we will play an assortment of board games in a "rotating manner" and meet in the sanctuary for music and words from Pastor Dale.

Be Brave! Be Daring! Be Ready To Have Some Fun!!!

F55 **Now Showing**
at F55 on
January 11



Come and watch on a big screen in the church basement, Disney's depiction of the impossible true story of how Penny Chenery Tweedy and colleagues guide her long-shot but precocious stallion to set, in 1973, the unbeaten record for winning the Triple Crown.

There will be no potluck this month.

Instead you're invited to bring a snack to share while watching the movie, which will begin at 11:15. The movie is two hours long.

Wednesday, January 11th, 11:00am—1:30pm

FAMILY • FRIENDS • FOOD • FUN • FAITH

Gifts Given. Gifts Received



As of December 27, our Year-end Financial Update is looking like this:

| | |
|-------------------------|-----------|
| Budget for 2011: | \$175,500 |
| Gifts Received to date: | \$165,175 |

Although we did not meet our budgeted goal in 2011, you can be assured that much more *was given over and beyond* our general fund needs. Through *Missions of the Month, committee fundraisers, benefits, and individual designated gifts*, we, and others through us, were blessed *beyond belief* from your generosity!

To put your gift-giving in perspective, you're invited, each time you put your offering envelope in the plate in 2012, to first look around at your church and how beautifully decorated and cared for it always is. Look at the people and the pastor; look beyond to the spaces in this church that are always brimming with children, visitors, the choir, the staff, the teens, the fellowship. Your generous gifts have provided *so much ministry* this past year. And that's only *within* our walls! So much of your generous giving has *also* allowed us to reach *beyond* our walls to families within our *communities, nation and world!* Here's an excerpt from a thank you letter received from a recent family (non-member with cancer) that Fish Lake Lutheran was able to help because of your generosity:

"I must say that as adults we may tend to get a tad hardened as life presents itself to us day after day. But I have no shame in relating that both my wife and I were overcome with emotions and more than a tear or two by this unexpected gift and the fact that the good people of Fish Lake Lutheran took it upon themselves to give to a family that is not even directly connected to Fish Lake Lutheran. Quite amazing I must point out. Please pass on our profound gratefulness for the gift of money and love from the hearts of those at Fish Lake Lutheran that were a part of this most wonderful event."

What a beautiful acknowledgement of the impact your generosity has on other brothers and sisters in Christ, *beyond* our walls. Other gifts in 2011 have included our new round tables from the Orville and Lorraine Anderson family, our computers and workstation for our new computer lab, African/Wasa student scholarships, and the home of Bernice Engmark which, after being sold, became an unexpected gift of \$50,000! *Incredible. Generous. Committed. Thoughtful.*

These are only a *few* of the words intended to describe what God has done through the hearts of His people at, and for, Fish Lake Lutheran Church. *Gifts given. Gifts received.*

We thank you, and thank God for you! Let's keep it up in 2012!

Church Council Minutes—December 6, 2011

Members Present: Nancy Bengtson, Mary Crawford, Jen Kroschel, Floyd Pinotti, Paula Rehder, Joel Santjer, Jason Wilking, Pastor Dale & Sue Kane. Absent: Tom Lofboom.

Devotions were led by Jen Kroschel “A Worthy Pursuit” inspired by “Come follow me” Jesus said, “and I will make you fishers of men.” Matthew 4:19

Affirmations: Mark Gerard, Trent & Jen Kroschel family for snow removal, Leap of Faith group for our first Wednesday soup supper of Advent, Craig & Jonelle Nelson family for the wonderful Kropp Kakor dinner served during F5, and Judy Nelson for her inspiring decorations each season.

Pastors Report: Pastor would like to thank LaDonna for her assistance in planning the music for the Advent worship series; this is his favorite time of the year. F5 included Kropp Kakor Dinner, Worship & Music, Advent Bingo and discussion on how families celebrate Advent. North Conference Ministerium was hosted by Fish Lake Church on November 15th. With so many families grieving, dealing with family illnesses and cancer Pastor would like to remind us to bring our prayer concerns to our church family too.

Committee Reports:

Audit: Completed third quarter equity account audit, next audit will include WELCA entire year.

WELCA: Previously reported in Vine & Branches. **CORRECTION from Dec. WELCA is working on confirmation STOLEES, *not* QUILTS for the confirmands.**

Christian Education: Discussed whether using the TIM Team for Kids Club was working, to be concluded with TIM Team. Senior High bible study *Faith4Life* is working well. Discussed fundraisers for 2012 Charter: Spring Spruce Up / Spaghetti Dinner (April 21st) / Lock In discussed, no definite date Jan or Feb set / Agape Concert scheduled for August 4th / Recharge Conference is scheduled for Jan 7, 9am-4pm 7 people from our congregation plan to attend.

Social Ministry/Mission of the Month: Only a few tags remain on the Giving Tree for needy families, donations can also include household cleaning products. Sunday school is also asking for Hats & Mitten donation for children in need.

Property Committee: Light Bulbs above the Altar need to be replaced. Since this committee is resurrecting help is needed, the lights are in a difficult to reach location, please bring your time and talents (possibly a hydraulic lift) to Joel to complete this task. In response to several of the recommendations we heard from the *Mission, Facility & Ministry Needs Study* the committee will get estimates on a fire door for the maintenance room and lever action door handles.

Safety Committee: A church key has been given to Justin Wood of the Chisago County Sheriff Department, which will be placed in an external lock box in case of an emergency. Committee will continue to monitor first-aid kits for replenishing.

Church Council Minutes—cont'd

New Business:

Pastor Dale & Nicole continue their due diligence on the 2011 Membership Removal List. We discussed how important it is to include our youth in the current events of the church and the possibility of having a Youth Council member vote, everyone acknowledged the benefit of youth participation, and our constitution *will* allow for any Confirmed member the right to vote. Discussion was tabled for a future meeting.

Family Camping is being planned for June 22, 23 & 24 at Camp Wapo. Many different types of camping will be available; tent, camper or cabin stays with a worship service on Sunday before departure.

Old Business:

We discussed our Interim Pastor possibilities; Tom Hanson, while a good candidate, is looking for a Long Term Intentional Interim position, Prs. Connie Warner, Linda Wahlstrom and Mary Kay Ashley were all named as potential interims. A short list will be compiled to present at the annual meeting. The council's goal is to have a decision regarding who will be our 3-month interim pastor, by the spring.

The review continues on the Cemetery Board's request for Council to submit an appeal to amend our Constitution that would appraise the relationship between Church and Cemetery. Pr. Dale will continue to gather information from churches with cemeteries to help us in determining the correct wording for our constitution. Discussion was tabled for a future meeting.

Thrivent monies will be used to complete the Mural Repair. Pastor Dale will contact Eric Carlisle to attempt to confirm an expected start date. There will be a Thrivent Workshop on February 26 during our Education hour, families are encouraged to attend.

2012 Summer Event discussed with the family camping the weekend before this may change plans to a day event. Some of the activities discussed include breakfast/brunch, baseball, buggy rides, horseshoes, square dancing...

Conservative Budget recommendations reviewed; council discussed and approved 8 to 1 to increase salaries, recommendations will be presented December 11th at the preliminary budget meeting.

Council will accept Pastor Dick Wehr's free offer to help create tentative action plans on some of the *Mission, Facility & Ministry Needs Study* recommendations, a meeting will be scheduled on a Saturday in February for our new church council.

Financial Report: Joel moved to approve, Jen seconded.

Respectfully submitted,
Sue Kane

January 2012

| Sunday | Monday | Tuesday | Wednesday | Thursday |
|--|---|--------------------------------------|--|----------------------------|
| <p>1 <i>1st Sunday of Christmas</i> Service of Lessons & Carols No Sunday School</p> <p>HAPPY NEW YEAR'S DAY!</p> | 2 | 3 | <p>4 WELCA 9:00 am</p> <p>Confirmation 6:30 pm</p> <p>No Choir/Chimes</p> | 5 |
| <p>8 <i>Baptism of our Lord</i></p> <p>F5@5 5:00 pm</p> | <p>9</p> <p>Worship/Music Committee Meeting 7pm</p> | 10 | <p>11 F55 11:00 am</p> <p>Confirmation 6:30 pm No Chimer practice Choir Practice 7:15 pm</p> | 12 |
| <p>15 <i>2nd Sunday after the Epiphany</i> Holy Communion</p> <p>Faith4Life Senior High Bible Study 6-8pm</p> <p><i>Vine & Branches items due</i></p> | <p>16 Martin Luther King Jr. Day <i>Church Office Closed</i></p> | 17 | <p>18</p> <p>Confirmation 6:30 pm No chimer practice Choir Practice 7:15 pm</p> | 19 Knitting 7:00 |
| <p>22 <i>3rd Sunday after the Epiphany</i> Annual Meeting & Potluck following worship</p> | <p>23 Kids Klub 5:30-7:15 pm</p> | <p>24</p> <p>11:00 am Prime Time</p> | <p>25</p> <p>Confirmation 6:30 pm God's Chimers 6:30 pm Choir Practice 7:15 pm</p> | 26 |
| <p>29 <i>4th Sunday after the Epiphany</i> Youth Sunday- Souper Bowl of Caring</p> | 30 | 31 | | |

Sunday Morning Schedule

9:00 a.m. Adult Ed

9:00 a.m. Sunday School

10:00 a.m. Worship

Refreshments and fellowship

| | Friday | Saturday |
|----|--------|---|
| | 6 | 7 |
| | 13 | 14 Kristina Bengtson baby shower 1pm |
| pm | 20 | 21 Block of the Month Workshop 8:30 am-5:00 pm |
| | 27 | 28 |
| | | |

Offering Counters

- 1st** Rick & Debbie Lofboom, and Cindy Blesener
- 8th** Joel & Katie Santjer, Mary Kay Linder, Candy Twingstrom
- 15th** Julie Osborne, Diane Solberg, and Wendy Norling
- 22nd** Jenny Niedzielski, Mary Street, Bill & Michelle Young
- 29th** Chris Yelle, Lori Zengler, Sandy Brown

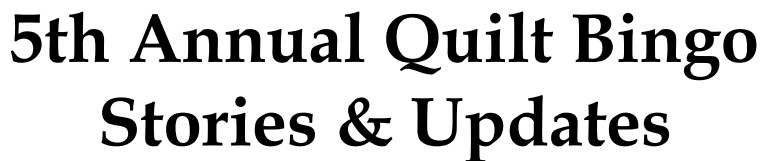
Coffee Hosts

- 1st** Jack & Julie Osborne, Tony & Marilyn Wicklund
- 8th** Sunday School-Mark & Paula Rehder, Kyle & Sara Nelson, Faith Handt
- 15th** Leap of Faith- Bill & Michelle Young, Eric & Jill Gustafson, Todd & Teena Ramberg
- 22nd** WELCA
- 29th** Africa Group

Snow Shovel Volunteers Needed!

It is that time of year- we need volunteers to help shovel the sidewalks and steps after we receive snow. It is great exercise for the body and soul! Please contact the church office for more information and to put your name on the "shoveler list." Thank You!





5th Annual Quilt Bingo Stories & Updates

“Our lives are like quilts – bits and pieces, joy and sorrow, stitched with love.”

(Winners at the Quilt Bingo were asked to share how their quilt would be used and where it would end up. Here are some stories that have been sent back to us.)

Quilt #23- Enchanted

“One of the most rewarding activities that has happened to me since I retired from teaching was to become more involved in the WELCA sewing day the first Wednesday of each month. Even though I can’t sew at all, these women of Fish Lake welcomed me with open arms and make me feel that whatever work I do is very much appreciated.

Each month when I arrive at church for WELCA sewing, it seems as though someone has completed a quilt and we have a chance to appreciate their hard work and beautiful craftsmanship. We are lucky to have such a talented group among us.

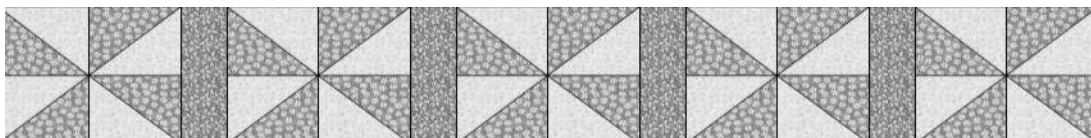
This was my third year attending the Quilt Bingo event and this year I won the baby quilt entitled “Enchanted” on the last game! As this is a baby quilt, it will be a wonderful gift someday when there is an addition to our family. This quilt is extra special as it was created and sewn by Candy Twingstrom. Candy was our day care provider for Maggie when she was an infant.

Special thanks to Candy and all the women of WELCA who do so much to make Quilt Bingo a wonderful community event.” ~*Deb Lofboom*

Quilt #16- Charming Fractions

“My husband and I will use this quilt in our home to keep warm in the fall. I fell in love with the quilt and said “I would love to get Bingo” ... and I did. Its beautiful!”

~*Peggy Beck*



A Message From Sister LaDonna

I was driving to Minneapolis one day last week. Usually when I drive I listen to the radio or I'm deep in my own thoughts. This day however I was driving next to a car with a bumper sticker that caught my attention. I had to look twice to make sure that I had read it correctly. It said, "DOG is my copilot." I had to think for a minute. That should be "GOD is my copilot." But of course, "dog" is "god" spelled backwards and this guy probably has a dog he really loves, or he is making fun of people who acknowledge God as an important part of their lives.

As I drove on I started thinking about whether God was my copilot. I imagined God sitting next to me. I imagined myself as the pilot of my own plane and when I needed help or got off track I could ask God to help me. I was acknowledging that God was an important part of my life. But then I realized that I had it all wrong. God is not the copilot, as if I was flying the plane by myself and only needed help from the copilot when I needed a nap or had to go to the bathroom.

You see there are lots of influences in our Western culture that want us to believe that it's all about us. As Christians, we have to realize that it's not about us, it's about God. We are not the pilot, God is. So how are our lives different because God is the Pilot? We are the hands and feet of God in the world. God uses us to bring justice and peace and hope and healing to the world. We need to take our directions from the Pilot. We need to be open and intentional about seeing who and what God brings into our lives and then responding to the needs that we see. Our treasures and our talents are not only for our enjoyment and use. They are the tools that God has given us so that we can respond to the needs of the world.

It's not easy to give up the controls and move to the copilot's seat. We are faced with the question, can we trust God? We are also going to fail miserably. But God is still the Pilot and God will not give up on us.

I love hearing your comments and questions. Please connect with me at ladolson@msn.com or 651-674-8526.

Dog is my co-pilot[®]

January Mission of the Month— *Souper Bowl of Caring*

On Sunday, January 29

Fish Lake Lutheran's Youth will be leading the worship service and collecting monetary and food donations for North Branch and Cambridge Food Shelves.

But throughout the month of January, we, as a congregation, we will be joining thousands of schools, congregations, and community organizations in the nation that will help *tackle* hunger in our local communities.

More than 20 years ago, the *Souper Bowl of Caring* began with a simple prayer from a single youth group:

"Lord, as we enjoy the Super Bowl football game, help us to be mindful of those without even a bowl of soup to eat."

Since that day, more than \$81 million has been raised for local charities across the country through *Souper Bowl of Caring*. It has become a powerful movement that is transforming the time around Super Bowl weekend into the nation's largest celebration of giving and serving.

Through this mission, people learn what it's like to make a positive difference in the world—as they collect food, raise money and volunteer to work in charities that provide shelter to the homeless, food to the hungry and compassion to those in need.

Be part of this movement that is sharing God's love with those in need. Throughout the month of January, please give generously, and on/after Super Bowl Sunday, every dollar donated will go directly to our local Cambridge and North Branch food shelves.

Thank you!



TACKLE



HUNGER



This is a letter from a student that Fish Lake Lutheran Church sponsors through the Bega Kwa Bega program.

Our donations touch and bless in ways we cannot even imagine. Thank you for being the hands and feet of Jesus.

Also check out the *Saint Paul Area Synod* website, under For Bega Kwa Bega Congregations, for the newest additions of student pictures.

IMAGE SECONDARY SCHOOL
P.O. BOX 1057
IRINGA

Dear

31th OCTOBER 2011

I greet you and continue well in the name of Jesus. I hope that you are fine.

The aim of this letter is to say thanks for paid me school fees. And God bless you for help me. Now I am form three) Study hard in order to pass my examination good. I wish you good life and work.



Your faith fully
Dmyinga

DIANA MYINGA
PARISH OF WASA



Please keep LaDonna Olson and her daughter Jenni Olson in your prayers as they are scheduled to visit our partner congregation, Wasa, and our friends in Iringa, Tanzania from December 30, 2011 – January 17, 2012. They will surely greet them on behalf of all us.

WELCA Meeting Minutes—December 7, 2011

The meeting was opened by our president, Barb Sauer. Seven members were present.

I. Reports

- A. The secretary's report was read and accepted.
- B. The treasurer's report was read and accepted.
- C. Thank you notes were read from Cambridge & North Branch Family Pathways, North Branch Senior Center and Habitat for Humanity.
- D. WELCA Sunday- WELCA will not be serving in December- Christmas Day. Thrivent will be serving on our day in February. We will help serve for the Annual Meeting in January.

Old Business

Quilt Needs:

Baptismal Quilts: We have 2 girl's and 4 boy's on hand. We tied Casey's quilt.

Wedding Quilts: We have 3 on hand.

Graduation Quilts: Will will work ahead on this. We only need one for 2012.

Global Health Ministries: We sorted out the sewing room today and got an order ready.

Habitat for Humanity: We donated \$200.

Updates:

Ceiling Fan in kitchen: To be done.

Quilt Bingo-2012: Running inventory, about 18 in progress including kits.

Block of the Month: December 17th Quilt drawing will be held. Workshop in Jan. for BOM- cost is \$20.00.

Bundles of Love: Delivery was made by Barb of 34 quilts for Children's Hospital.

Pork Dinner: Discussion was made on profits.



Balance brought Forward-
\$3,022.73

Income:

Thrivent (quilts)-400.00
Food Shelf-107.00
Block of the Month-203.00
Coffee-34.00
WELCA offering-14.00
Lorraine Anderson-100.00
Ornament Quilt Drawing-515.00
Pork Dinner-1,538.00
Craft & Bake Sale-418.75
Total: \$3,329.75

Expenses:

Camb/North Branch Food Shelf-207.00
Beginning cash (Pork Dinner)-300.00
Pork Dinner-139.74
Equal Exchange coffee-276.00
County Market-171.94
Cards (Kathy L.)-11.73
BOM fabric-94.91
Fall Cluster-100.00
FDIC charge- .50
Total: \$1,201.82

Balance on Hand: \$5,150.66

WELCA Meeting Minutes—*cont'd*

Tapestry/Dignity Quilt: For Suite Living Nursing Home-it was delivered on BOM day. We thank Candy for doing this for us.

New Business

- The \$2,000.00 pledge for the interim pastor's salary was given today.
- Confirmation Stoles are in progress.
- Our Annual Report was reviewed.
- WELCA group will help serve for Annual Meeting Potluck.
- Gifts for area Non-Profits were discussed. We will donate \$100 to each
 - A. Grace Point in honor of Delores Onstad.
 - B. Brask Nursing in honor of Maynerd Twingstrom.
 - C. Villages in honor of Addie Fleming.

Next meeting is January 4th, 2012.

The meeting was closed with the Lord's Prayer.

Respectfully submitted,
Marcie Whitman, acting Secretary

Our Women of the ELCA at Fish Lake are in need of Knitters, Crocheters, & Quilters/Sewers for work from home projects

All Knit and Crocheted items are for our *Bundles of Love Mission Project*. Patterns for these are available on the WELCA Board in the church basement. If you need yarn, we have some in our sewing room. This is an ongoing project with no specific time to complete. Return to designated bin in the church basement when done.

And for our Quilters/Sewers, we have two kits prepared to complete two quilts for *Quilt Bingo*. Most of the cutting has been completed and now need to have the blocks sewn together. Pattern included in the kit Kits are on the table under the WELCA Board, please let one of the sewing ladies know when you pick them up and if you need to review the directions prior to sewing.

Please return to WELCA when completed. We would like these done and returned by *end of March*. We are grateful for any work you can do for these projects and thank you for all your time.

CONFIRMATION NEWS4U

Wednesday, January 4
 Lesson 6-*Holy Communion: A Meal to Share*
Wednesday, January 11
FELLOWSHIP EVENT
Wednesday, January 18
 Lesson 7-*The Creed and the Trinity*
Wednesday, January 25
SERVICE EVENT

WAPO
Confirmation
Retreat

Saturday, Feb. 4th,
 9:00am—Sunday
 Feb. 5th, 12:00pm

YOUTH
 SUNDAY

SUNDAY
 JANUARY 29th

THE YOUTH WILL LEAD
 THE SERVICE. PLAN TO
 BE THERE...

Faith4life

JUST FOR SR. HIGH
Sun, January 15th
6-8pm

Hang out, play games,
 and Bible Study and
 worship together.

We will also be spending
 part of the evening
 planning Youth Sunday.
 Bring your ideas and a
 snack to share!

**LEAD
 OF
 FAITH**

Come
 watch
 movie
 clips and
 talk about how they
 tie into our faith.

Sundays 9-9:45am

GUITAR LESSONS

Guitar Lessons began again on
 Wednesday, January 4th, at 5:30pm

News4Kids sundayschool

Sunday, January 8th

CELEBRATION SUNDAY

Come learn about "DAVID AND GOLIATH" and practice to sing in worship

Sunday, January 15

A "David and Goliath" Rotation

Sunday, January 22

A "David and Goliath" Rotation

Sunday, January 29

A "David and Goliath" Rotation

THE "DAVID AND GOLIATH" ROTATIONS

Make sure you don't miss:

THE COOKING CORNER

PUPPETS IN THE MASTER'S THEATRE

GREAT GAMES

SUNDAY SCHOOL is from 9:00-9:45 Sunday mornings

KIDS KLUB

FOR: K to 5th Grade

WHEN: MONDAY Jan. 23rd

5:30-7:15pm

**Supper, Games, Songs,
Crafts, Bring a Friend!**

God's Chimers

**Join the Chimers
practicing**

Wednesday nights

at 6:30pm

**For all 3rd-5th
Graders**



**save
the
Dates**

**YOUTH
CAMP**

SEEDS CAMP

**Fri., July 6—Sun., July 8
Completed 2nd-3rd Grade**

**\$115 \$115 non-refundable de-
posit due March 4**

YOUTH CAMP

**Sun., July 8—Fri., July 13
Completed 4-8th Grade**

**\$365 \$100 non-refundable
deposit due March 4**

T.I.M. Team CAMP

9th-12th Grade Leadership Team

Saturday, July 6—Friday July 13

Talk to Carrie or Pastor Dale for an application for Fish Lake Lutheran TIM Team

summer 2012

Lake Wapogasset Bible Camp

Spend a week-end with your family and your Fish Lake family at the **FIRST FAMILY CAMP WEEK-END** at Lake Wapogasset!

FRIDAY, JUNE 22nd—SUNDAY, JUNE 24th

Interest meeting to ask questions on Sunday, January 29 following worship

Family Camp

GAMES

WORSHIP

BIBLE STUDY

SWIMMING

**ACTIVITIES JUST
FOR KIDS**

SINGING



2011 FINANCIAL STEWARDSHIP AT FISH LAKE LUTHERAN

| Date | Actual Offering | Budgeted Offering | Percent | Above/Below Budget | Worship Attendance |
|---------------------|---------------------|---------------------|------------|---------------------|--------------------|
| November 6 | \$3,373.30 | \$3,375.00 | 99% | -\$1.70 | 143 |
| November 13 | \$3,749.05 | \$3,375.00 | 111% | \$374.05 | 148 |
| November 20 | \$1,302.00 | \$3,375.00 | 39% | -\$2,703.00 | 99 |
| November 27 | \$3,670.00 | \$3,375.00 | 39% | \$295.00 | 143 |
| YEAR TO DATE | \$149,192.21 | \$162,000.00 | 92% | -\$12,807.79 | |

MEMORIALS

Fish Lake Lutheran gives many thanks for gifts received in memory of *Orville Anderson*, and from Rick & Deb Lofboom, Jim Saari & Jan Lofboom in memory of *Clayton Anderson*.

A "Give to the Max Day" Update

Fish Lake Lutheran was one of many nonprofit organizations throughout the state that asked fellow Minnesotans to show their generosity by donating online at www.GiveMN.org during the third annual "Give to the Max Day" on November 16th. We are pleased to announce that **\$315.58** was raised during the online fund raising! This money has been set aside in the Sabbatical Fund account to help cover interim pastor expenses during Pr. Dale's fall 2012 sabbatical.

Fish Lake Lutheran Church is so thankful to have been blessed by such generous and supportive people! Thank you to all who gave and continue to give! It's easy to give online! Just go to our website at www.fishlakelutheran.org and go from there!



giveMN.org
Click. Contribute. Change Your World.

GROW

At Fish Lake Lutheran Church

43353 Cedarcrest Trail

Harris, MN 55032

Phone: 651-674-4252

Fax: 651-237-1190

Online: fishlakelutheran.org

Office Hours:

Monday-Friday 9:00 a.m.–1:00 p.m.



Non-profit
Organization
U.S. Postage
PAID

Harris, MN
Permit No. 3

ADDRESS SERVICE REQUESTED

Fish Lake Lutheran Leadership & Staff

Pastor

Dale Stiles

Director of Youth and Family Ministry

Carrie Stiles

Administrative Assistant

Nicole Linder

Financial Administrator

Lorrie Bauer

Director of Music Ministry

Sister LaDonna Olson

Pianist

Cindy Blesener

WELCA

Barb Sauer

Custodians

Robin Graham &

Tom Anderson

Church Council Members

Nancy Bengtson—President

Mary Crawford

Sue Kane

Jennifer Kroschel

Tom Lofboom—Secretary

Floyd Pinotti

Paula Rehder

Joel Santjer—Vice President

Jason Wilking—Treasurer

